

GentleMax Pro®

Integrated Aesthetic  
Treatment Platform



 **CANDELA™**  
Science. Results. Trust.



# GentleMax Pro®

## Beyond gold standard laser hair removal suitable for your needs

Today, whatever your business needs, from hair removal to vascular lesions to pigmented lesions, the Gentle Pro series has a device that's right for you.

### Patient Satisfaction

A positive experience means patients will be coming back for more and spreading the word about their GentleMax Pro® procedure.

- Lasting results
- Comfortable
- Fast

### Ease of Use

Great technology always keeps the user in mind, which is why the GentleMax Pro® system is designed to make it simple for doctors and technicians to treat every patient.

- Intuitive interface
- Guided setup
- Easy selection and storing of treatment parameters and histories
- Single, lightweight, ergonomic handpiece for simple, comfortable operation

### Efficiency

Power, speed and larger spot sizes all combine to let your practice treat more patients in less time.

- Up to 80% permanent hair reduction after three treatments\*
- Treat large areas like back and legs in just minutes

### Versatility

While the GentleMax Pro® system is best known for hair removal, that's only the beginning of what your practice can offer. Our 755 nm and 1064 nm wavelength laser technology also treats:

- Pigmented lesions
- Redness and facial vessels
- Spider and leg veins
- Wrinkles
- Onychomycosis (nail fungus)



### Dual Wavelength Delivery System

Single, lightweight, ergonomic handpiece delivering both 755 nm and 1064 nm wavelengths for ultimate treatment convenience.

### Multiple Spot Sizes

6, 8, 10, 12, 15 and 18mm spot sizes are anatomically appropriate and offer a wide range of fluence delivery capabilities.

### Large Spot Size Delivery

Dual wavelength 20, 22 and 24mm spot sizes enable shorter treatment times.

### Specialty Spot Sizes

Specialty Delivery System option with 1.5, 3 and 3x10mm spots for vascular and pigmented lesions, and 5mm for nail fungus.\*

### Intuitive Touch Screen

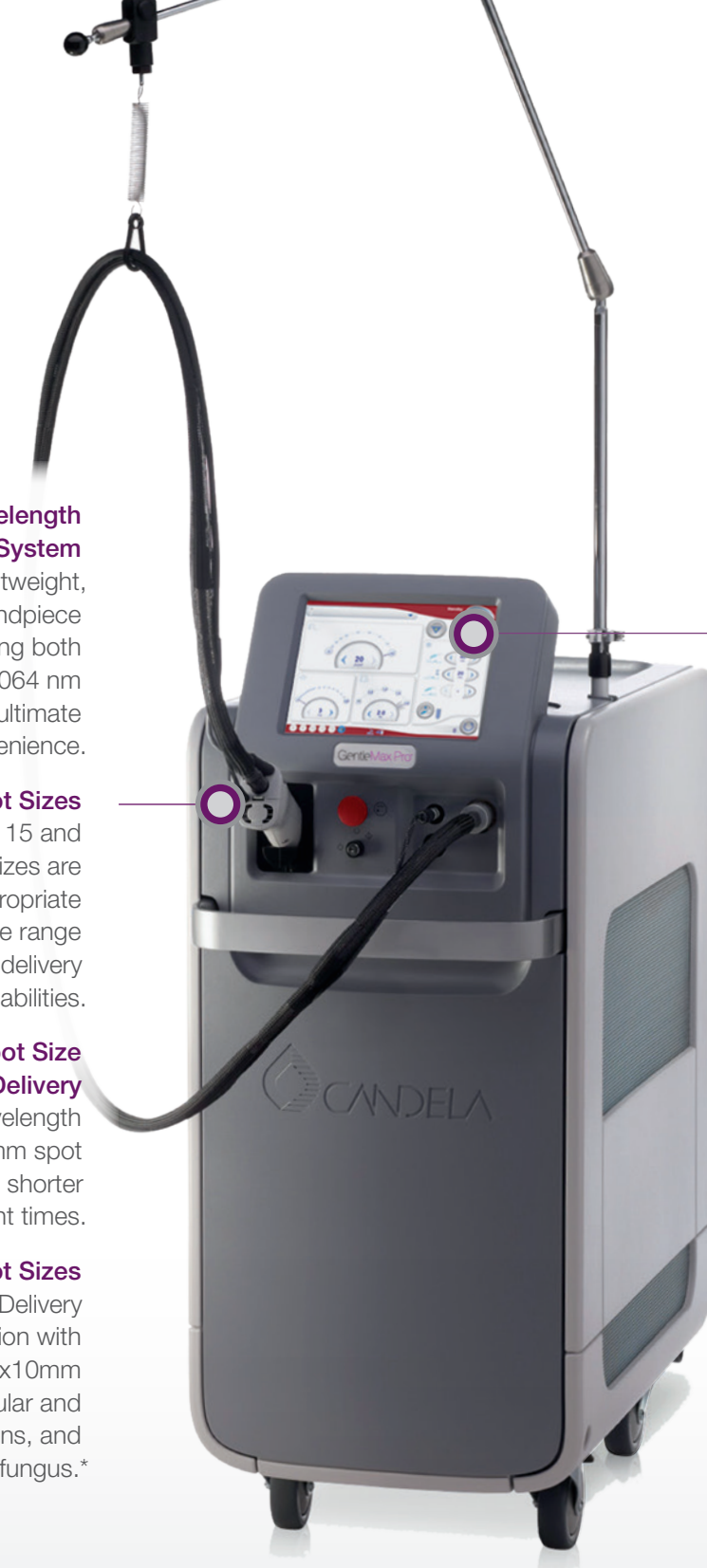
Redesigned to help you select treatment parameters more easily.

### Variable Pulse Duration

Microsecond to millisecond pulse durations provide results when treating pigmented and vascular lesions on a variety of skin types.

### DCD™ or Air Cooling – It's Your Choice

Choose from either our cryogen-based Dynamic Cooling Device™ (DCD™), which saves time, is operator independent, scales with fluence and provides consistent protection of the epidermis, or the Air Cooling Compatible™ (ACC™) system.



The Gentle family of products is a world leader in laser hair removal with:



YEARS OF EXPERTISE



≈20,000

SYSTEMS INSTALLED



86

COUNTRIES

\*Comparing 18- versus 12-mm spot size in hair removal using a Gentlelase 755-nm alexandrite laser. Nouri K, Chen H, Saghari S, Ricotti CA Jr. Dermatol Surg. 2004 Apr;30(4 Pt 1):494-7. Comparison of long-pulsed alexandrite and Nd:YAG lasers, individually and in combination, for leg hair reduction: an assessor-blinded, randomized trial with 18 months of follow-up. Davoudi SM, Behnia F, Gorouhi F, Keshavarz S, Nassiri Kashani M, Rashighi Firoozabadi M, Firooz A. Arch Dermatol. 2008 Oct;144(10):1323-7. doi: 10.1001/archderm.144.10.1323. Clinical comparison of four hair removal lasers and light sources. Amin SP, Goldberg DJ. J Cosmet Laser Ther. 2006 Jun;8(2):65-8. Untoward Responses - Laser Hair Removal and Vascular Lesions: Burning, blistering, scabbing, crusting, hypopigmentation, hyperpigmentation, purpura, or herpes simplex activation, in rare cases, scarring may result. Hypopigmentation or hyperpigmentation may not appear for 1 - 2 weeks and in rare cases may last for months or longer. If hypopigmentation or hyperpigmentation occurs treatment should not be performed until pigmentation returns to normal.

\*1.5 & 3mm spot sizes available with GentleYAG Pro-U & GentleMax Pro systems.





# GentleMax Pro®

The combined power of GentleLase Pro-U® and GentleYAG Pro-U® systems.

## Dual-configuration 755 nm Alexandrite laser & 1064 nm Nd:YAG laser

For the GentleMax Pro® Series' full range of capabilities, the GentleMax Pro® system combines all the power, wavelengths and advantages of the GentleLase Pro-U® and GentleYAG Pro-U® devices. It's the consolidated system that's trusted for all skin types.

- Optimally treats all skin types (Fitzpatrick I-VI)
- DCD™ cooling system offers patient comfort
- Spot sizes as large as 24mm deliver remarkably fast and efficient hair reduction

## Comprehensive and versatile treatment capabilities:

- Hair removal
- Vascular lesions
  - Port wine stains
  - Hemangioma
  - Telangiectasia
  - Diffuse redness
  - Venous lake
  - Leg veins
- Pigmented lesions
- Wrinkles
- Onychomycosis (nail fungus)



Optimal for All Skin Types



Easily upgradeable from the GentleLase Pro-U® or GentleYAG Pro-U® configuration

"The ability to easily and seamlessly upgrade Candela's single wavelength systems to the dual wavelength GentleMax Pro configuration is an attractive option for a growing practice."

Shlomit Halachmi, M.D., Dermatologist, Cambridge, MA

# Clinically proven results across indications

## Hair Removal



Before



After\*

Photos courtesy of Marcelle Kutun, M.D.

## Benign Pigmented Lesions



Before



After\*

Photos courtesy of Jill Waibel, M.D.

## Leg Veins



Before



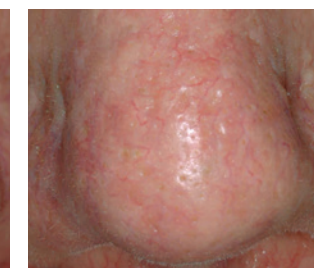
After\*

Photos courtesy of E. Victor Ross, M.D.

## Nasal Telangiectasias



Before



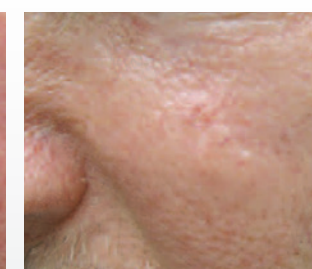
After\*

Photos Courtesy of M. Chasin, M.D.

## Diffuse Redness



Before



After\*

Photos courtesy of Stephen W. Eubanks, M.D.

## Wrinkles



Before



After\*

Photos courtesy of Dr Chie Chiba, M.D.

"To be able to have a laser that's able to achieve multiple targets successfully is clearly vital so that you don't have to buy multiple lasers."

Jason Lupton, MD, Dermatologist, San Diego, CA

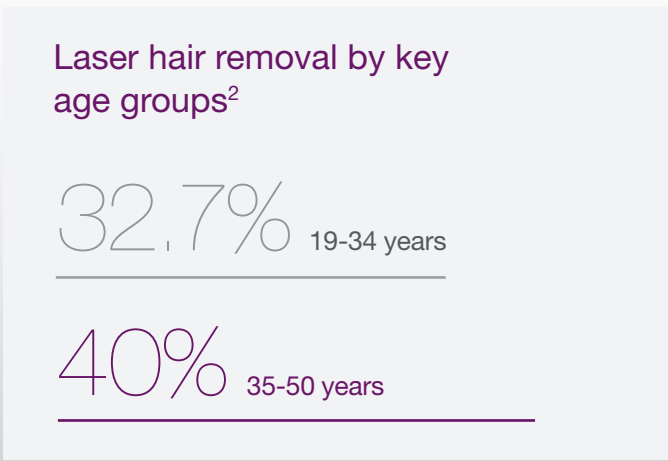
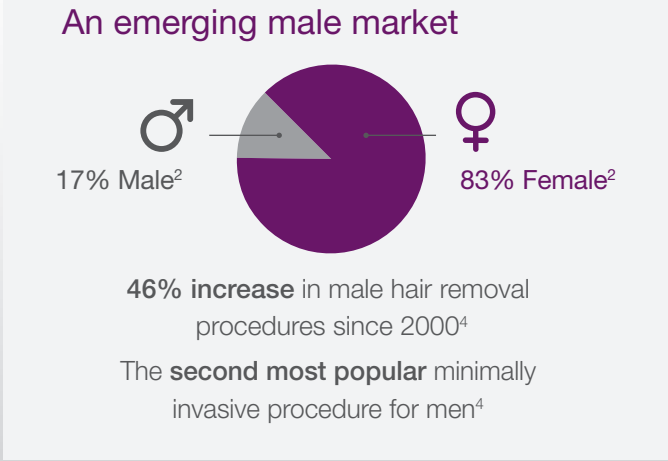
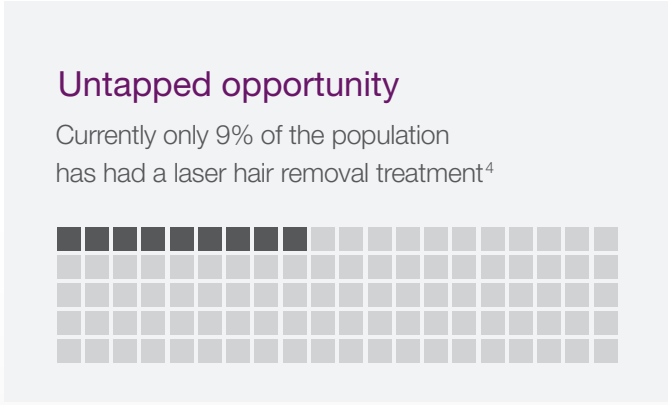
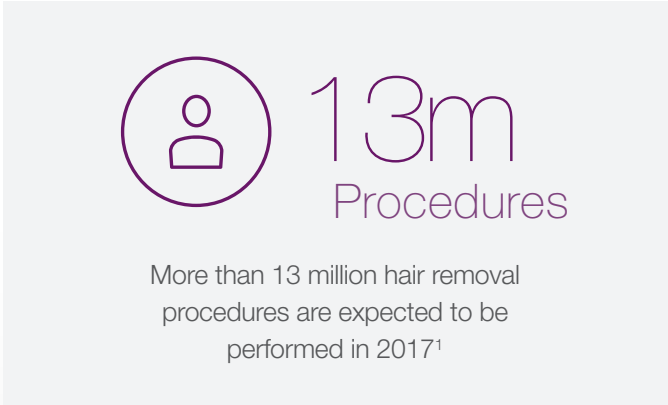
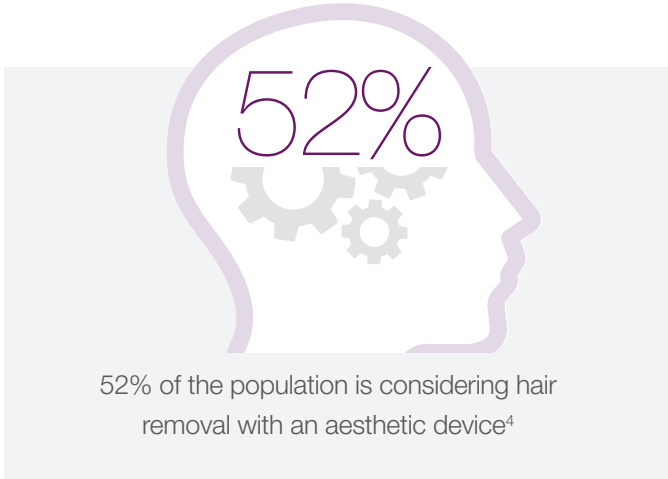
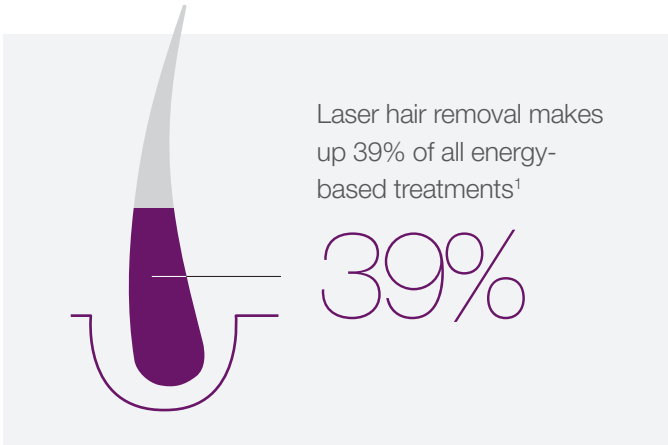


\*All photos are unretouched. Individual results may vary.

# Creating results for patients and practices

With 13 million hair removal procedures<sup>1</sup> expected to be performed this year, hair removal is among the top three non-surgical aesthetic procedures. Hair removal is also the perfect procedure to introduce new patients to your practice and expand your treatment portfolio.

Hair removal is one of the top three non-surgical aesthetic procedures<sup>3</sup>



## GentleCool Pro

The new premium GentleCool Pro DCD™ Cryogen featuring genuine Chemours HFC 134a US 20 in an improved, innovatively designed aluminium canister.

The benefit of DCD™ compared to any other cooling method is it is completely operator independent. DCD™ provides epidermal protection with each pulse.

Unlike steel cryogen canisters, Candela's aluminium canister cannot rust, which can be a major source of debris found in clogged valves, which in turn may cause device damage and patient injury.

The tamper-proof Candela icon on the bottom of every canister guarantees you are using genuine GentleCool Pro DCD™ Cryogen.



Dynamic Cooling Device (DCD™) large spot delivery system handpiece

### Advantages of using GentleCool Pro DCD™ Cryogen:

- 1. Premium Quality  
GentleCool Pro cryogen is 99.9% pure with less than 20 PPM unsaturates, designed for optimal DCD™ performance \*
- 2. Newly Designed Aluminium Canister  
Designed to provide consistent output pressure, to ensure the right amount of epidermal protection with every pulse
- 3. Quality Manufacturing  
Rigorous inspection and cleaning methods keep contaminants out of the DCD™ line
- 4. Customer Convenience  
A new box of 15 canisters per case provides improved ordering and inventory convenience
- 5. Exclusively from Candela  
Top of the line product with Candela guarantee and availability on an ongoing basis

\*Data on file, Candela Corporation.



SYSTEM SPECIFICATIONS		
Laser Type	Alexandrite	Nd:YAG
Wavelength	755 nm	1064 nm
Repetition	Up to 10 Hz	Up to 10 Hz
Max Delivered Energy	53 Joules (J)	80 Joules (J)
Pulse Duration	0.250 -100 ms	
Spot Sizes	6, 8, 10, 12, 15, 18mm	
Specialty Delivery System Option Spot Sizes	Small - 1.5, 3, 5 and 3 x 10mm	Large - 20, 22 and 24mm
Beam Delivery	Lens-coupled optical fiber with handpiece	
Pulse Control	Finger switch, foot switch	
Dimensions	107cm H x 46cm W x 69cm D (42" x 18" x 27")	
Weight	118 kg (260 lbs)	
Electrical	200-240 VAC, 50/60 Hz, 30 A, 4600 VA single phase	

ALEXANDRITE FLUENCE		ND:YAG FLUENCE		Dynamic Cooling Device™
SPOT SIZE (MM)	FLUENCE (0.25 MS TO 100 MS)	SPOT SIZE (MM)	FLUENCE (0.25 MS TO 100 MS)	
3	40 to 400 J/cm²	1.5	300 to 520 J/cm²	Integrated controls, cryogen container and handpiece with distance gauge
3 x 10	10 to 200 J/cm²	3	130 to 400 J/cm²	
5	9 to 40 J/cm²	3 x 10	80 to 300 J/cm²	<b>Cryogen</b> Chemours HFC 134a US 20
6	6 to 150 J/cm²	5	9 to 55 J/cm²	
8	6 to 100 J/cm²	6	6 to 200 J/cm²	<b>DCD™ Spray Duration</b> User adjustable range: 20-100 ms
10	6 to 60 J/cm²	8	6 to 150 J/cm²	
12	10 to 40 J/cm²	10	6 to 100 J/cm²	<b>DCD™ Delay Duration</b> User adjustable range: 10-100 ms
15	6 to 30 J/cm²	12	10 to 70 J/cm²	
18	6 to 20 J/cm²	15	6 to 44 J/cm²	<b>DCD™ Post-Spray Duration</b> User adjustable range: 10-50 ms
20	5 to 16 J/cm²	18	6 to 30 J/cm²	
22	4 to 13 J/cm²	20	5 to 24 J/cm²	Optional Air Cooling Compatible (ACC) Handpiece Available
24	3 to 11 J/cm²	22	4 to 20 J/cm²	
		24	3 to 16 J/cm²	

**For more information** about how the GentleMax Pro system may help achieve your practice goals, contact your local Candela sales professional or visit [candelamedical.com](http://candelamedical.com)

References. **1.** Michael Moretti, Medical Insight (global statistics). **2.** ASPS (American Society for Plastic Surgeons®) 2016 U.S. Plastic Surgery Statistics Report. **3.** ASPAS (The American Society for Aesthetic Plastic Surgery) 2016 U.S. Cosmetic Surgery National Data Bank Statistics.™ **4.** American Society of Dermatological Surgery Survey, 2014.